

DATA SHEET

Intertenancy Wall Variation

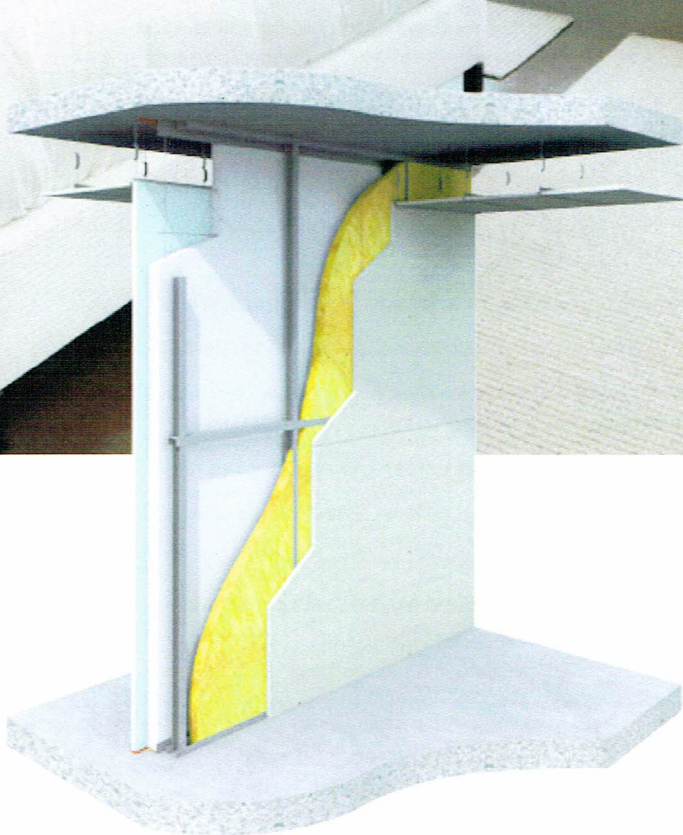
Express Head Detail*

CSR Hebel has developed a system variation for Intertenancy Wall construction that reduces material, labour and installation costs while delivering much faster build times.

The key difference in this system variation is the head detail, which treats the Hebel tongue and groove panel as the fire rated element by itself. This removes the requirement for plasterboard to continue from the slab to the soffit, allowing a far simpler lining setout without fire rated dampers and GPOs.

CSR Hebel has worked with CSR Gyprock™ to develop a 1370mm wide board that is installed horizontally with only one joint. This caters for 2700mm ceilings that can either be Square Set or with P50 detail, reducing cutting, waste and jointing time.

* Patent pending



Hebel Express Head Detail* – Another innovation from Hebel that improves the cost, productivity and process of intertenancy wall installation

-  **Save on materials**
-  **Save on installation time**
-  **Save on labour costs**
-  **Save on waste materials**



Streamlined Installation

Slotted steel angles are fitted to the slab and soffit. Hebel panels, on a bed of Hebel mortar, are then fixed to these steel angles. A backing rod and sealant at the soffit is installed to meet fire and acoustic requirements.

Steel frames are installed as usual, and ceiling framing is able to be installed at the same time. Insulation is installed to cavities, as per the requirements of the Option 1 or Option 2 detail preferred.

Wall linings of 1370mm wide Gyprock™ Plasterboard sheets are installed horizontally, set and jointed with fire and acoustic sealant at the slab edge only.

Ceilings are installed to frames either Square Set or with P50 detail.

Key Installation Benefits

- Only one sealant required at the head instead of 3 in current systems
- Metal framers can do steel stud and ceiling frames at the same time
- One plasterboard joint saves time, material and labour
- No need for fire rated GPOs. The fire dampers are connected to the Hebel only.

Advantages over Fire Rated Plasterboard Walls

- Similar price compared to stud/double plasterboard each side
- Significant reduction in waste - more economical system and sizes means fewer offcuts
- Savings in electrical tender - no need for fire rated GPOs
- Savings in fire rated collars - system uses smaller lengths
- Savings in fire dampers - width of Hebel only
- No need to box around plasterboard penetrations - reduces labour and installation time



Hebel is non-combustible, achieving high FRL levels



Achieves high acoustic performance levels

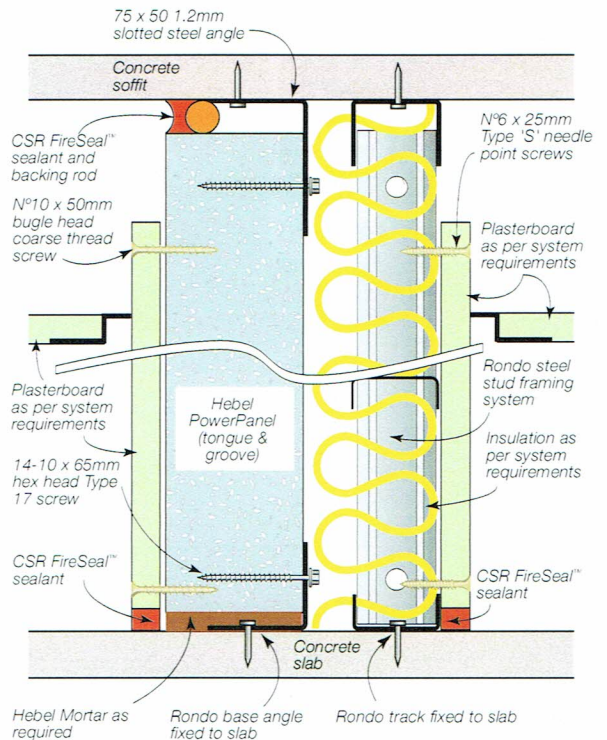


Lightweight yet solid, secure and durable

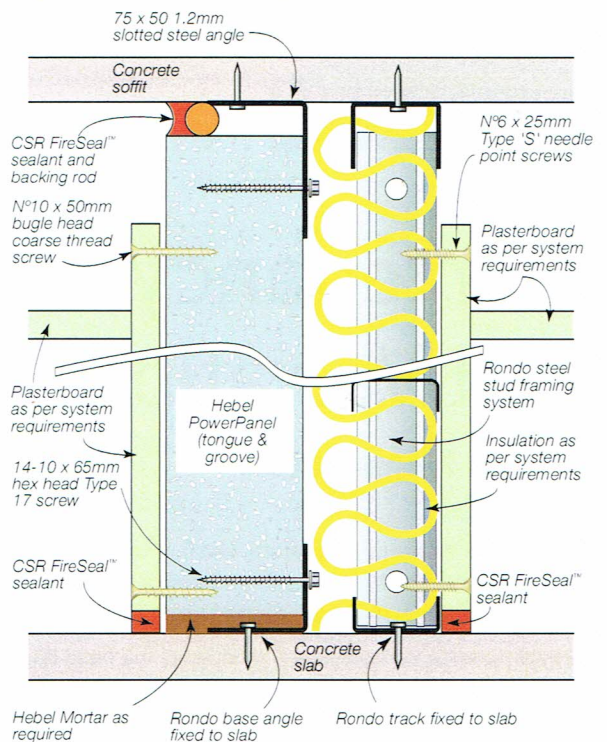


GECA accredited. Hebel delivers superior environmental benefits compared to concrete

Option 1 - P50 System



Option 2 - Square Set System



For more information on Hebel Intertency Walls please call **1300 369 448**

or visit www.hebelaustralia.com.au

